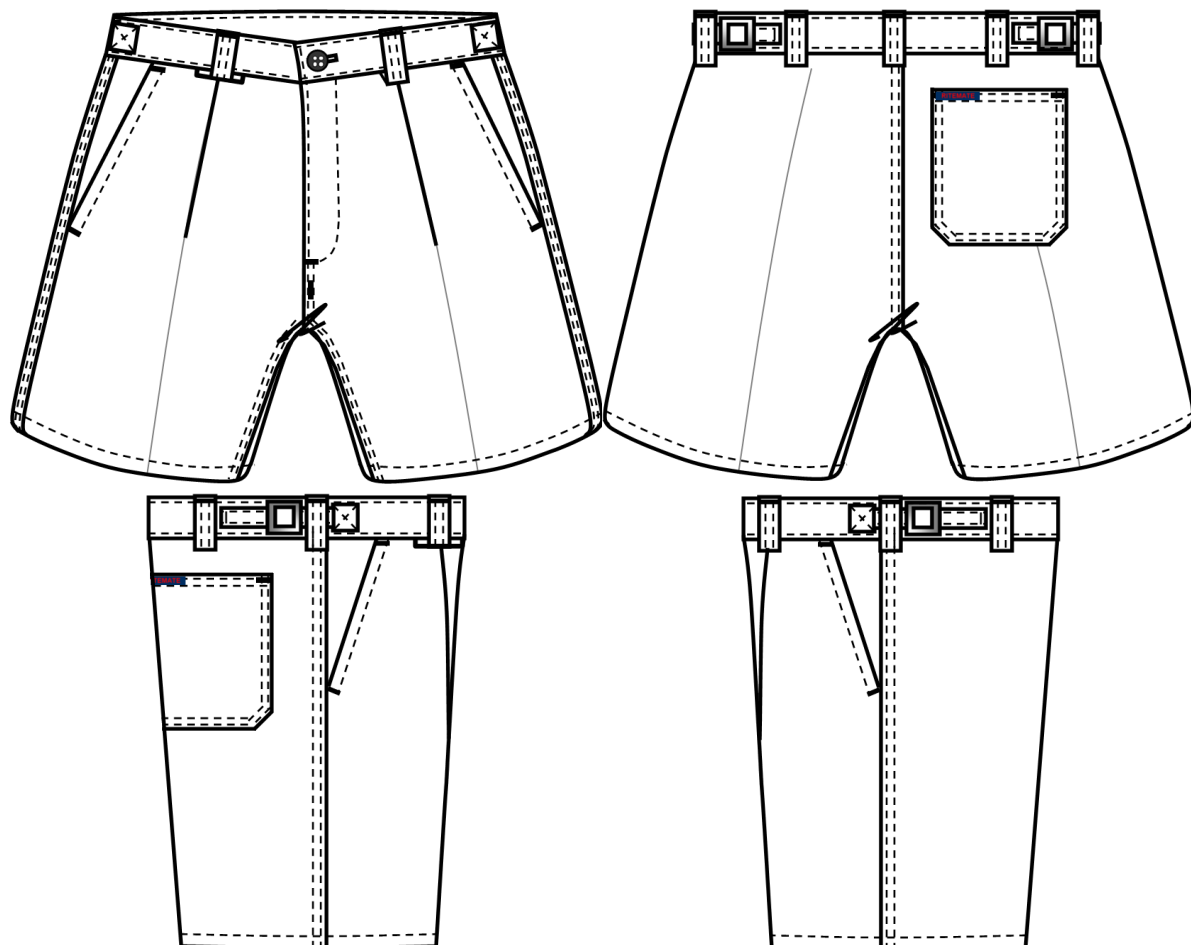


**Ritemate Workwear Bottom**

**COMMERCIAL IN CONFIDENCE**

**RM1002S Belt Loop and Side Tab Combo Short**



**UPF 50+**

**Features**

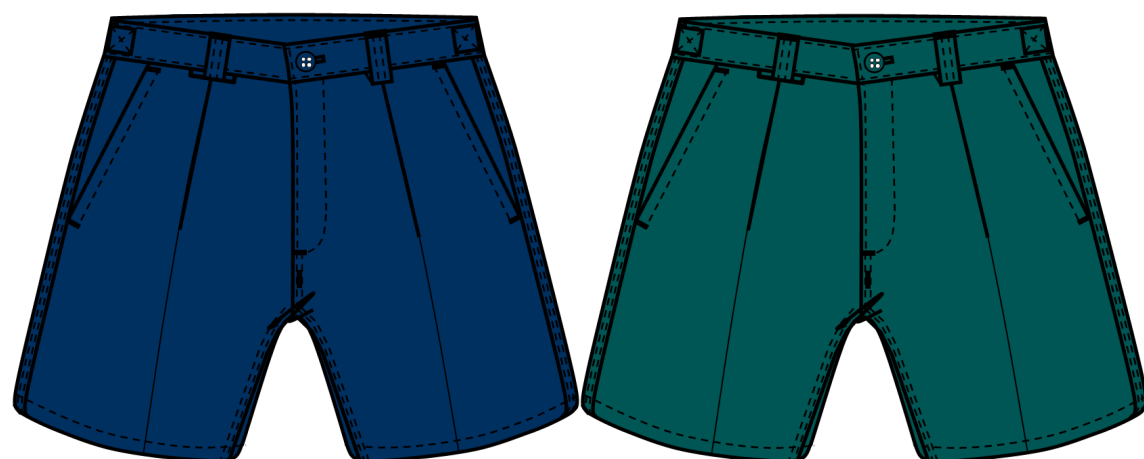
- Superior Garment Assembly, Twin Needle Stitching and Bar-tacks for Extra Strength
- Side Tab Designed for Adjustment
- Quality YKK Zippers
- AS 4399:2020 Standard for UPF50+

**Fabric**

Cotton Twill, 311gsm

**Colour**

Bottle                      Khaki                      Navy



Navy

Khaki

Bottle

**Tape Configuration**      Nil

**Hi Visibility Application**

Day time                       Night time

**Size Range**

72 - 127

**Fabric Quality**

|                            |                 |            |
|----------------------------|-----------------|------------|
| Dimension Stability        |                 | +/-3%      |
| Colour Fastness to Washing | Colour Change   | 4          |
|                            | Colour Staining | 4-5        |
| Colour Fastness to Rubbing | Dry             | 3-4        |
|                            | Wet             | 2-3        |
| Colour Fastness to Light   |                 | 4-5        |
| Tearing Strength           | Warp            | >=25 min N |
|                            | Weft            | >=21 min N |
| UPF (AS 4399:2020)         |                 | 50+        |

**Measurement Table**

|                 |      |      |      |      |      |      |      |      |      |      |      |      |  |  |
|-----------------|------|------|------|------|------|------|------|------|------|------|------|------|--|--|
| Major Points    | 72   | 77   | 82   | 87   | 92   | 97   | 102  | 107  | 112  | 117  | 122  | 127  |  |  |
| 1/2 Waist       | 36.5 | 39   | 41.5 | 44   | 46.5 | 49   | 51.5 | 54   | 43.5 | 46   | 48.5 | 51   |  |  |
| 1/2 Hip         | 52   | 54.5 | 57   | 59.5 | 62   | 64.5 | 67   | 69.5 | 72   | 74.5 | 77   | 79.5 |  |  |
| Inseam          | 18   | 18   | 18   | 18   | 18   | 18   | 18   | 18   | 18   | 18   | 18   | 18   |  |  |
| Outleg          | 42   | 43   | 44   | 45   | 45   | 46   | 47   | 47   | 48   | 49   | 49   | 50   |  |  |
| 1/2 Leg Opening | 29   | 29.5 | 31   | 31.5 | 32.5 | 33   | 34   | 35   | 36   | 37   | 38   | 39   |  |  |