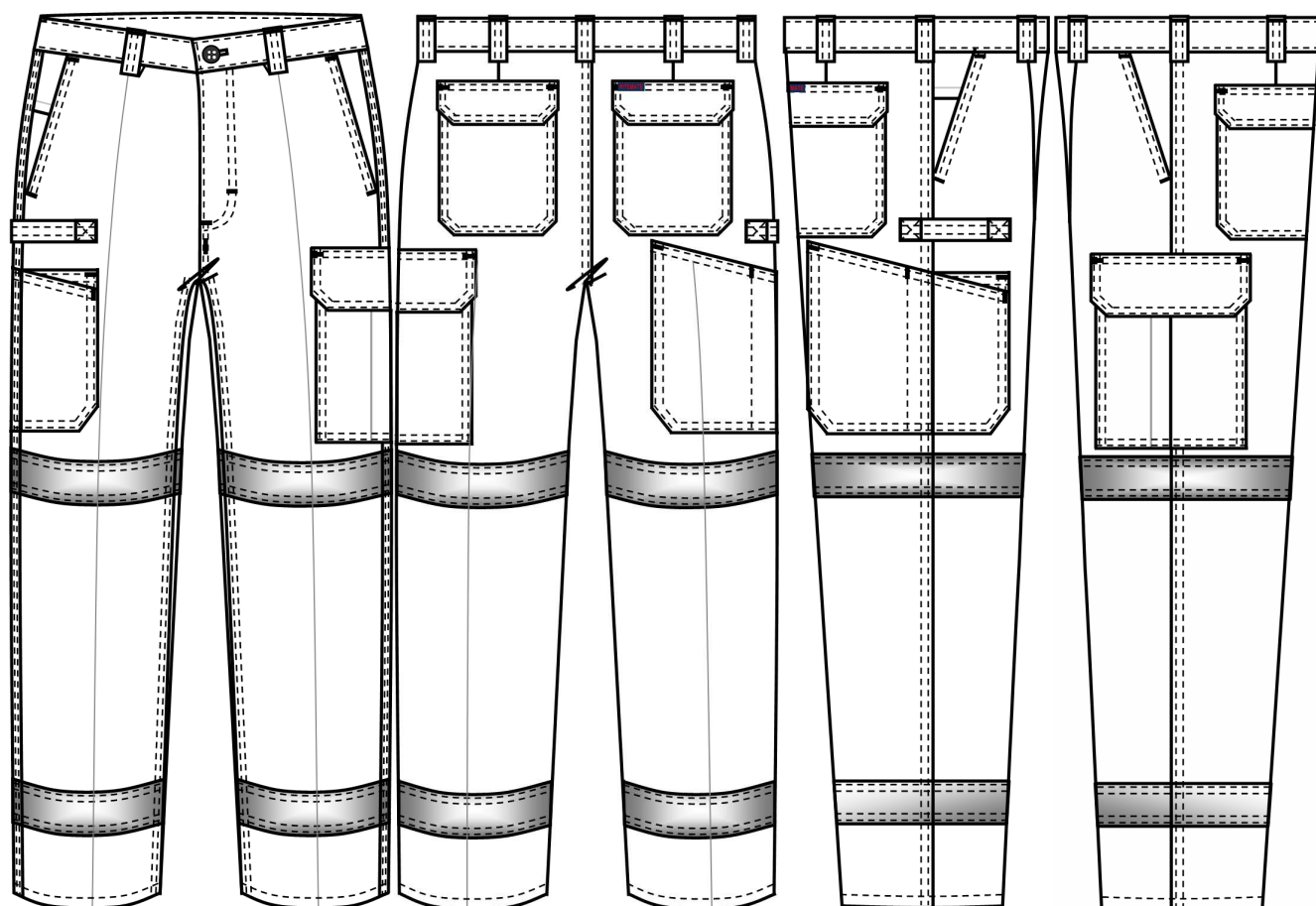


# Ritemate Workwear Bottom

## RM1004R Cargo Drill Trousers with Reflective Tape

**COMMERCIAL IN CONFIDENCE**



UPF 50+



Reflective Tape

**Features**

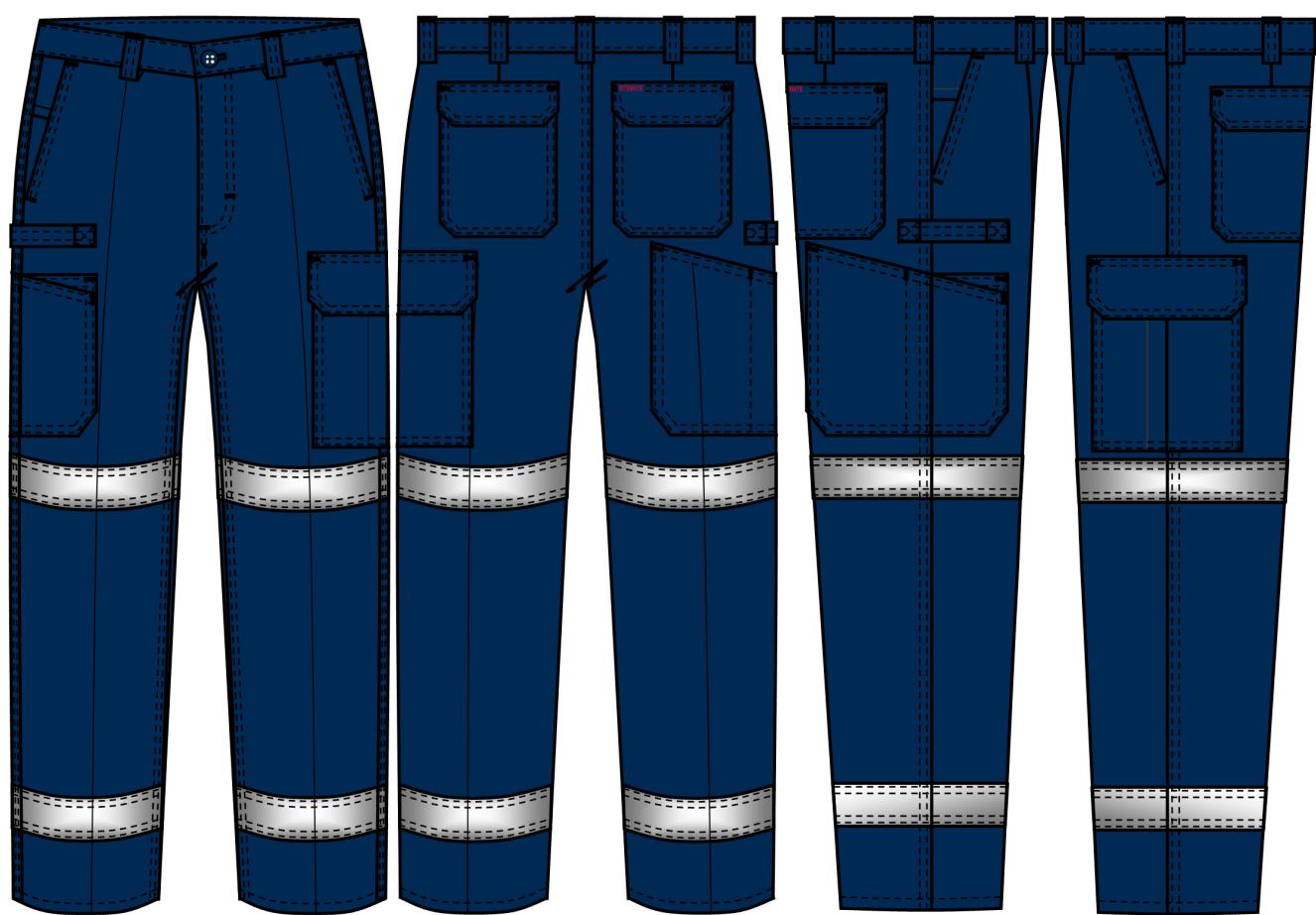
- Superior Garment Assembly, Twin Needle Stitching and Bar-tacks for Extra Strength
- Classic and Functional Cargo Pockets
- Quality YKK Zippers
- AS 4399:2020 Standard for UPF50+
- AS/NZS 1906:4:2023 for High Visibility Night Wear

**Fabric**

Cotton Twill, 311gsm

**Colour**

Navy



Navy

**Tape Configuration** Reflective Tape 50mm

one hoop on either side leg panels knee area  
one hoop on either side of leg opening

**Hi Visibility Application**



Day time



Night time

**Size Range**

72R – 112R

87S – 132S

79L – 94L

**Fabric Quality**

Dimension Stability			+/-3%
Colour Fastness to Washing	Colour Change	4	
	Colour Staining	4-5	
Colour Fastness to Rubbing	Dry	3-4	
	Wet	2-3	
Colour Fastness to Light			4-5
Tearing Strength	Warp	≥25 min N	
	Weft	≥21 min N	
UPF (AS 4399:2020)			50+

**Measurement Table**

Major Points	Regular Fit								
	72R	77R	82R	87R	92R	97R	102R	107R	112R
1/2 Waist	36.5	39	41.5	44	46.5	49	51.5	54	56.5
1/2 Hip	50	52.5	55	57.5	60	62.5	65	67.5	70
Inseam	79.5	80.5	82	83	84	85	86	87	88
Outleg	105	106	108	110	112	113	115	117	119

Long Fit			
79L	84L	89L	94L
40	42.5	45	47.5
55	57.5	60	62.5
86	87	88	89
113	115	116	118

Major Points	Stout Fit									
	87S	92S	97S	102S	107S	112S	117S	122S	127S	132S
1/2 Waist	44	46.5	49	51.5	54	56.5	59	61.5	64	66.5
1/2 Hip	55	57.5	60	62.5	65	67.5	70	72.5	75	77.5
Inseam	75	77	78	79	81	83	85	87	88	89
Outleg	98	100	103	104	106	108	111	114	116	118