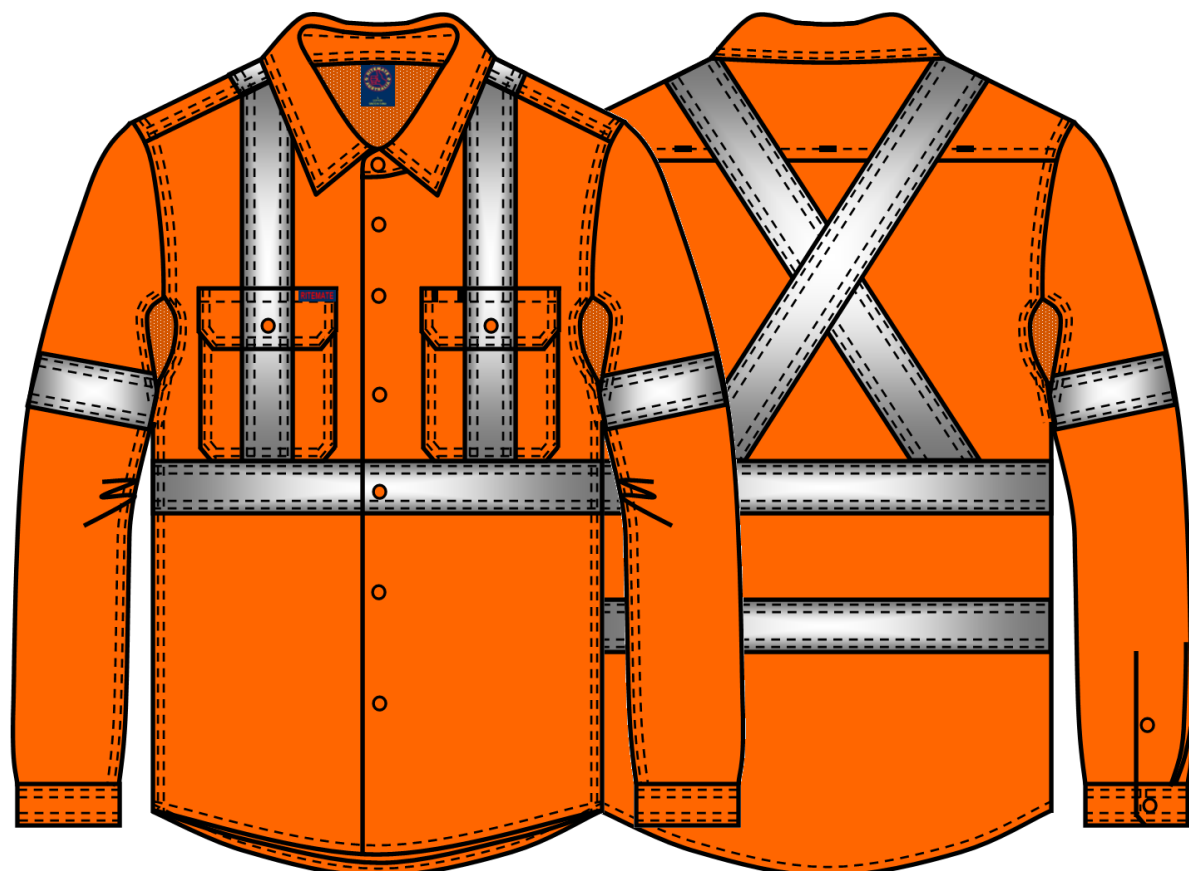


## Light Weight Shirt

### RM109VXR Vented Light Weight Open Front Long Sleeve Shirt with "X" Back reflective tape

**COMMERCIAL IN CONFIDENCE**



Orange



#### Features

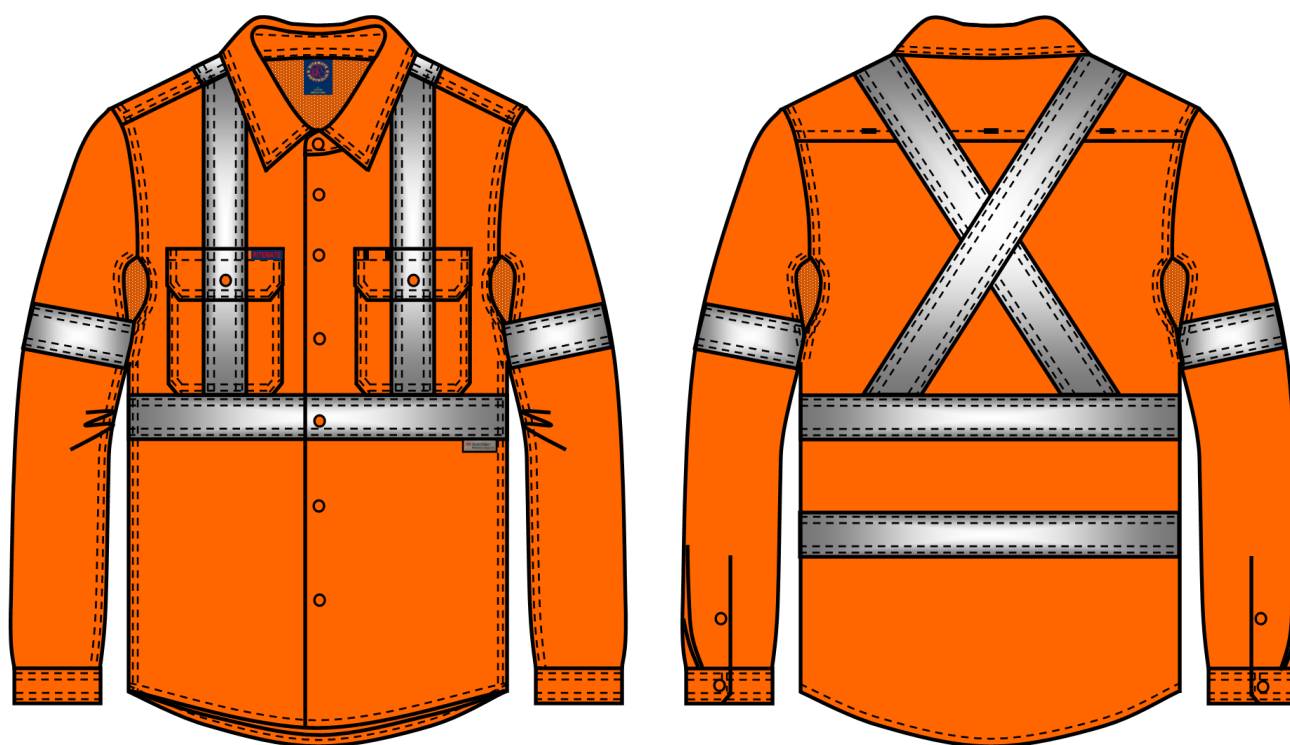
- Twin Needle Stitching and Bar-tacks for Extra Strength
- Cotton Mesh Cooling Vents Located at Underarm and Shoulder Positions
- Garments with Sleeves Comply with AS 4399:2020 Standard for UPF50+
- AS/NZS 4602.1:2011 and AS/NZS 1906:4:2023 for High Visibility Day/Night Wear

#### Fabric

Cotton Twill, 150gsm Light Weight

#### Colour

Orange



Orange

#### Mesh Ventilation

Underarm Gusset  Back Yoke

#### Cotton Mesh

#### Tape Configuration

Front Body: "H" pattern on front body  
Back Body: "X" pattern on back body  
Arms: 1 hoop

#### Reflective Tape 50mm

#### Hi Visibility Application

Day time  Night time

#### Size Range

XS - 5XL

#### Fabric Quality

Dimension Stability		+/-3%
Colour Fastness to Washing	Colour Change	4
	Colour Staining	4-5
Colour Fastness to Rubbing	Dry	3-4
	Wet	2-3
Colour Fastness to Light		4-5
Tearing Strength	Warp	>=15 min N
	Weft	>=12 min N
UPF (AS 4399:2020)		50+

#### Measurement Table

Major Points	XS	S	M	L	XL	2XL	3XL	4XL	5XL		
1/2 Chest	53	56	59	63	67	72	76	80	83		
Centre Back Length	79	80	83	84	86	88	90	92	95		
Sleeve Length	61	63	65	67	68	69	70	72	72		
Shoulder Width	45	46	49	51	55	56	59	63	64		
Pocket Dimension	Width 14 x Depth 17cm										