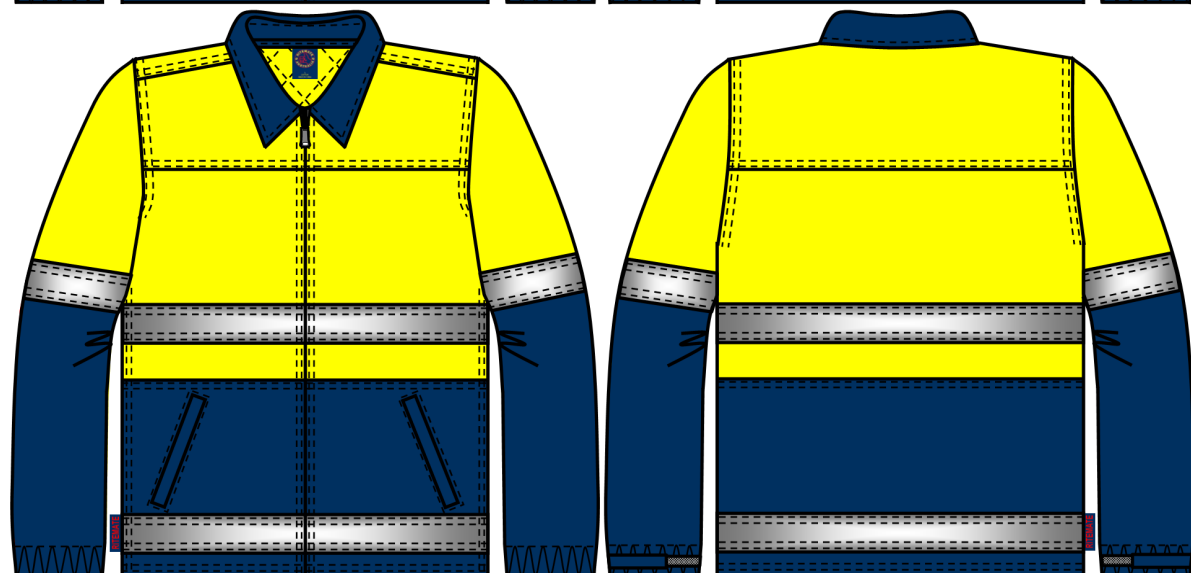
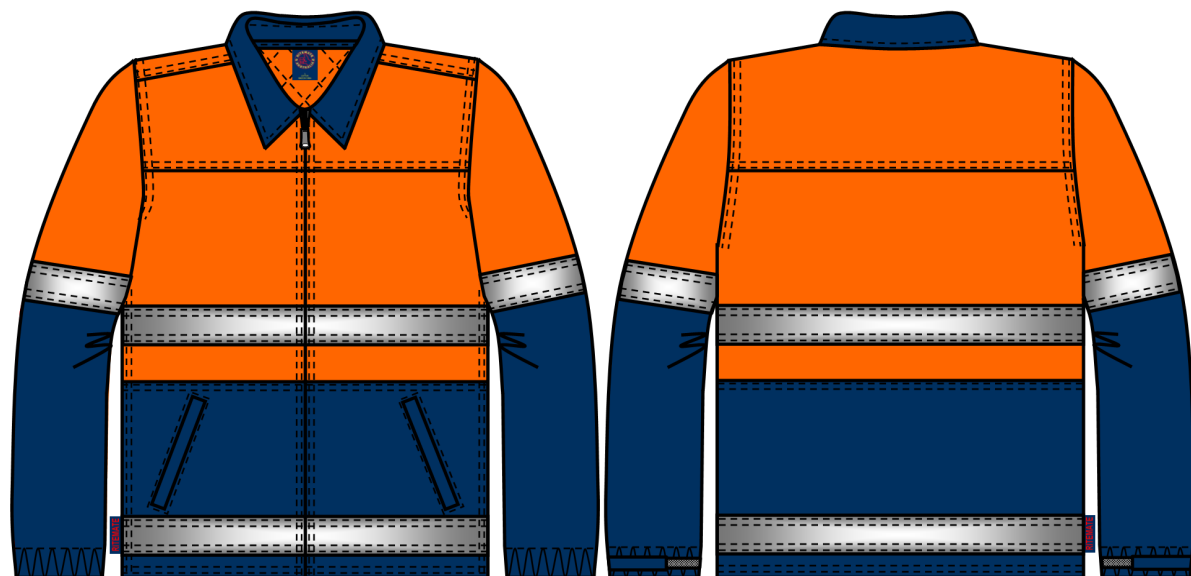


Ritemate Workwear Jacket

RM5071R 2 Tone Cotton Drill Jacket with Reflective Tape

COMMERCIAL IN CONFIDENCE



Orange-Navy

Yellow-Navy



Features

- Superior Garment Assembly, Twin Needle Stitching and Bar-tacks for Extra Strength
- Two Front Opening Angled Side Welt Pockets, Internal Zip Pocket Left Side, Internal Utility Pocket Right side, Internal Mobile Phone Pocket
- Adjustable cuff with touch tape
- Zip Front Opening with Vislon Chunky Zipper
- Garments with Sleeves Comply with AS 4399:2020 Standard for UPF50+
- AS/NZS 4602.1:2011 and AS/NZS 1906:4:2023 for High Visibility Day/Night Wear

Fabric

Cotton Twill, 311gsm

Colour

Orange-Navy Yellow-Navy

Tape Configuration **Reflective Tape 50mm**

Two Hoops on Body
One Hoop on Either Side Sleeve Arms

Hi Visibility Application

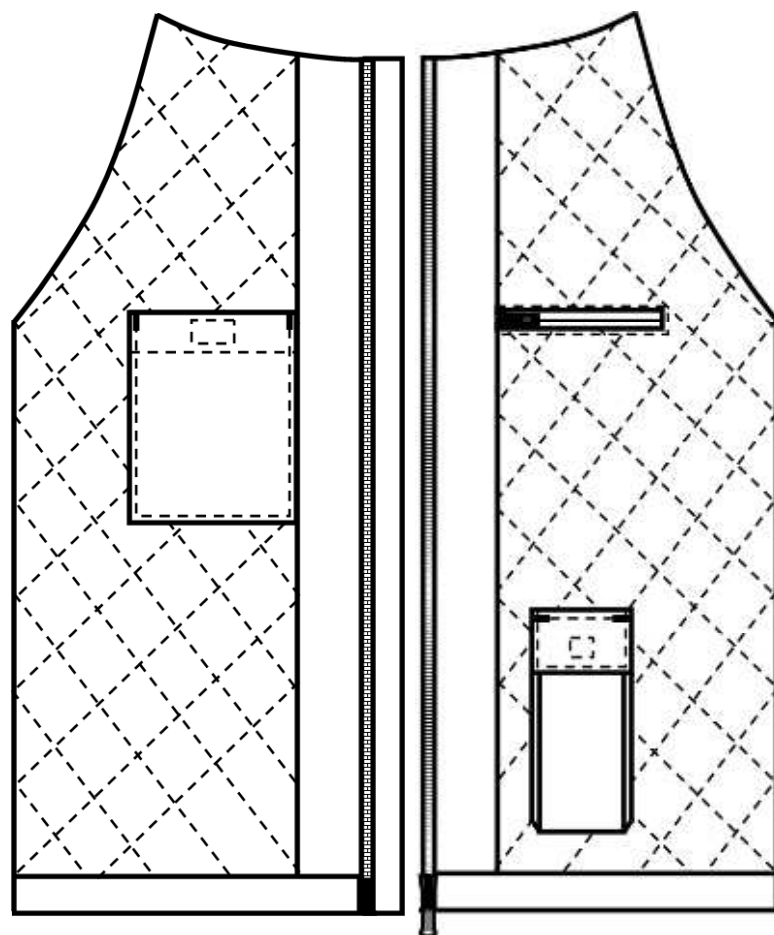
Day time Night time

Size Range

XS – 5XL

Fabric Quality

Dimension Stability		+/-3%
Colour Fastness to Washing	Colour Change	4
	Colour Staining	4-5
Colour Fastness to Rubbing	Dry	3-4
	Wet	2-3
Colour Fastness to Light		4-5
Tearing Strength	Warp	>=25 min N
	Weft	>=21 min N
UPF (AS 4399:2020)		50+



Internal View

Measurement Table

Major Points	XS	S	M	L	XL	2XL	3XL	4XL	5XL
1/2 Chest	60	62.5	65	67.5	70	72.5	75	77.5	80
Centre Back Length	77	78	79	80	81	82	83	84	85
Sleeve Length	87	89	91	93	95	97	99	101	103
Shoulder Width	47	49	51	53	55	57	59	61	63