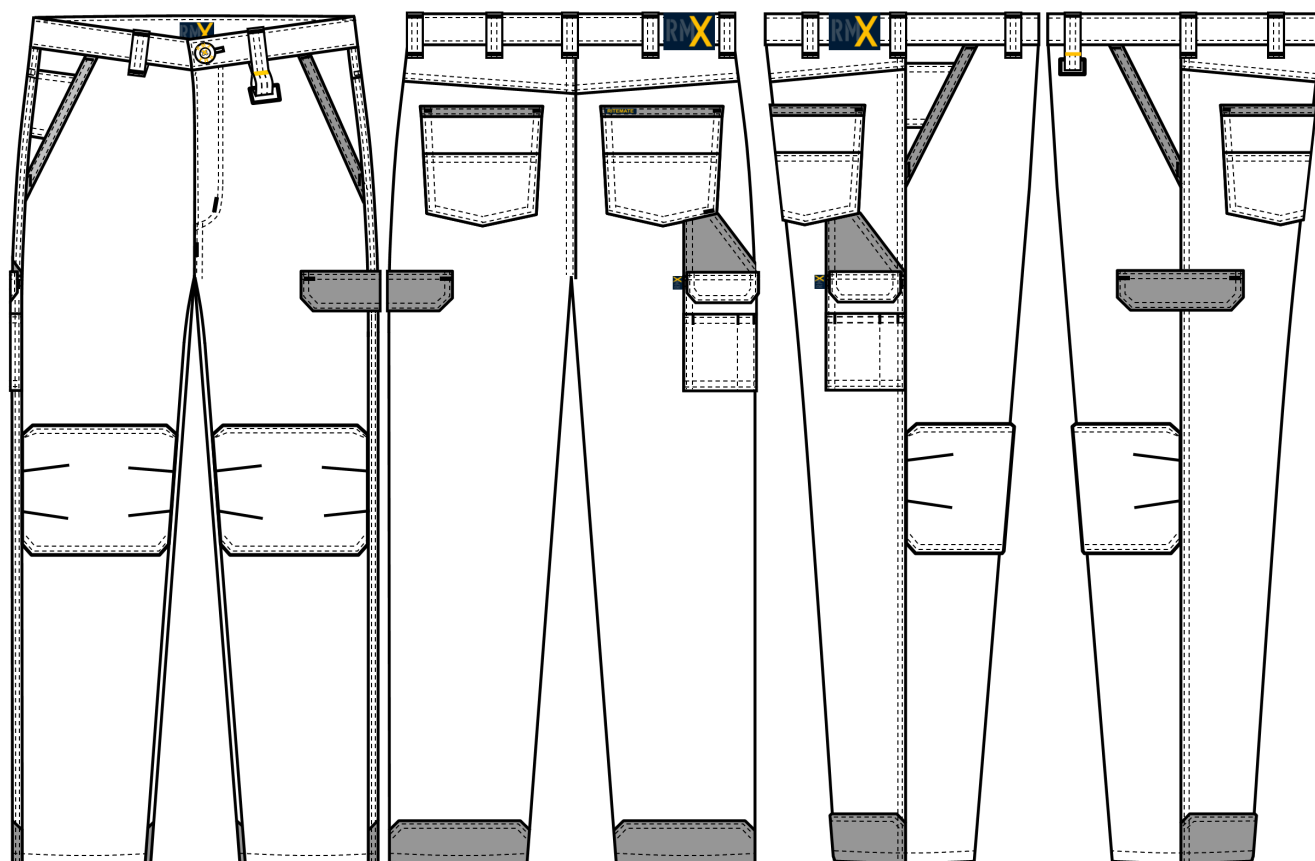


## RMX Bottom

### RMX011 RMX Flexible Fit Tactical Pant

**COMMERCIAL IN CONFIDENCE**



UPF  
50+

#### Features

- New Generation, Flexible Fit Styling
- Crafted from Premium Quality Stretch Cotton Twill with 2% Elastane, 200gsm Light Weight
- Left and Right Hand Utility Pockets
- Reinforced Knee Patch and Heel Patch
- Black Oxford Contrast Patches
- Glove Clip at Front Left Belt Loop
- Firm-Fit, Secure Phone Pockets
- Superior Garment Assembly, Bar-tacks and Twin Needle Stitching for Extra Strength
- Garment Washed for Supreme Comfort
- Market Leading "YKK Zipper"
- UPF50+ Meets AS/NZS 4399:2017

#### Fabric

Cotton Stretch (2%) Twill, 200gsm

#### Colour

Dark Navy      Tan

#### Tape Configuration

**Nil**

#### Hi Visibility Application

Day time

Night time

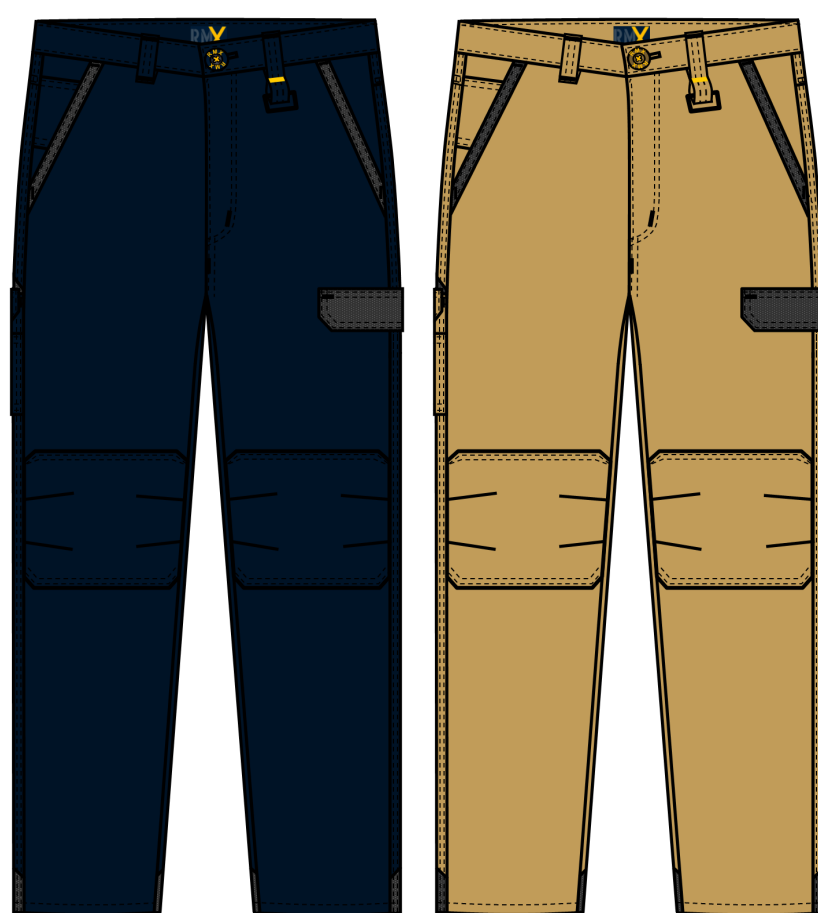
#### Size Range

**Men's Size**    72R – 112R    87S – 127S    79L – 94L

**Ladies Size**    8 - 24

#### Fabric Quality

Dimension Stability		+/-3%
Colour Fastness to Washing	Colour Change	4
	Colour Staining	4-5
Colour Fastness to Rubbing	Dry	3-4
	Wet	2-3
Colour Fastness to Light		4-5
Tearing Strength	Warp	>=18 min N
	Weft	>=15 min N
UPF (AS/NZS 4399:2017)		50+



Dark Navy

Tan

#### Measurement Table

Ladies Size	8	10	12	14	16	18	20	22	24	Long Fit			
Regular Fit	72R	77R	82R	87R	92R	97R	102R	107R	112R	79L	84L	89L	94L
1/2 Waist	36	38.5	41	43.5	46	48.5	51	53.5	56	39.5	42	44.5	47
1/2 Hip	45	47.5	50	52.5	55	57.5	60	62.5	65	49.5	52	54.5	57
Inseam	77	79	81	83	85	86	88	88	88	84	86	88	90

#### Stout Fit

Major Points	87S	92S	97S	102S	107S	112S	117S	122S	127S
1/2 Waist	43.5	46	48.5	51	53.5	56	58.5	61	63.5
1/2 Hip	53.5	56	58.5	61	63.5	66	68.5	71	73.5
Inseam	76	78	80	82	84	85	86	86	86